

Design No. CEJ 480 H

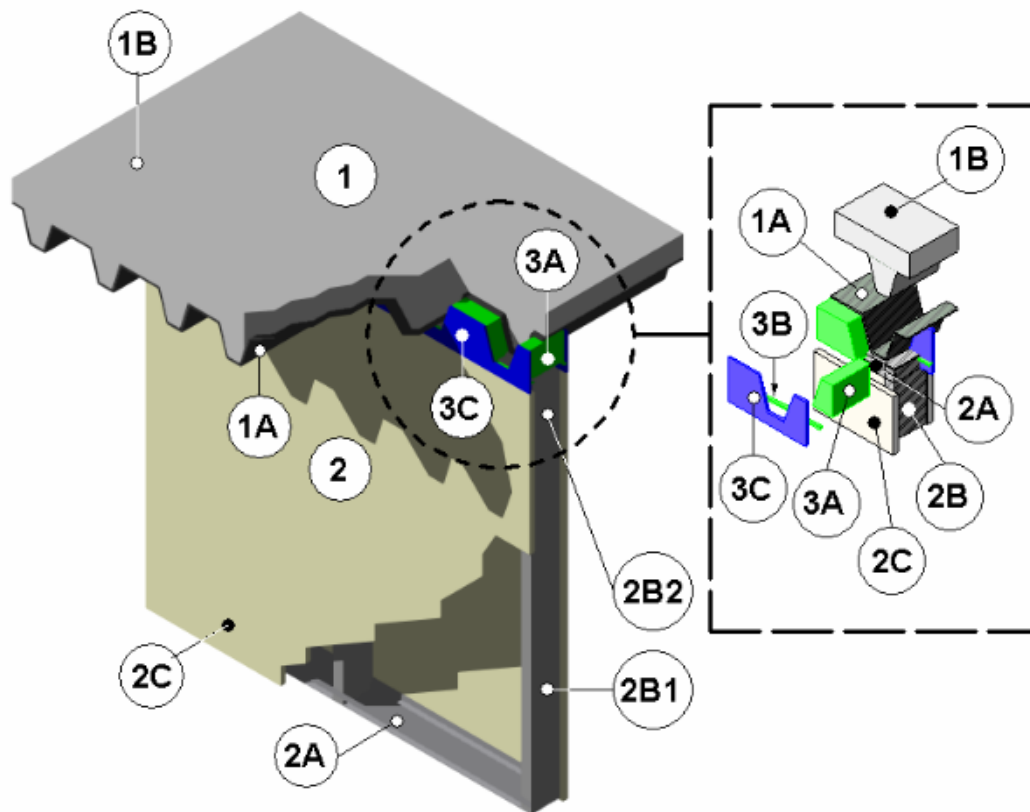
HEAD OF WALL JOINT SYSTEM

ASTM E 1966-01

T-Rating – 1 hr.

F-Rating - 1 hr.

Rated for  $\pm 18.25\%$  vertical movement



1. FLOOR ASSEMBLY – The floor assembly consists of the following:

- A. Steel Floor and Steel Units – Minimum 18 GA steel fluted decking with open flutes measuring nominally 6-1/2 inches wide at the base, nominally 5-1/4 inches wide at the top, and nominally 3 inches deep. The direction of the flutes is perpendicular to the top of the wall assembly (Item 2).
- B. Concrete – Steel fluted decking (Item 1A) covered with normal weight concrete (approximately 150 pcf and nominally 2000 psi) nominally 2 inches deep at its minimum thickness

above the flutes in the steel fluted decking (Item 1A).

2. WALL ASSEMBLY – Non-loadbearing wall assembly positioned perpendicular to the floor ceiling assembly (Item 1) and consisting of the following:

- A. Steel Floor Tracks and Ceiling Runners – Two “C-shaped” roll formed nominal 0.030 inch thick steel tracks nominally measuring 3-5/8 inches wide with two 1-3/8 inch vertical legs. Use nominal 3/16-inch diameter, 1-1/4-inch long, Tapcons, hexhead concrete screws, to attach one track

## Fire-Resistant Joint Systems

perpendicular to the flutes in the steel decking (Item 1A) on the bottom of floor ceiling assembly (Item 1) and the other track to the top of the floor assembly (Item 1) so that it is aligned plumb with the top track.

### Listed Manufacturer:

Trakloc International LLC  
358TTS-030-138 Tracks (Item 2A)

- B. Studs – Use “C-shaped” roll formed nominal 0.030 inch thick telescoping steel stud assemblies measuring 3-5/8 inches wide with two 1-3/8 inch vertical legs. Telescoping stud assembly consists of a stud (Item 2B1) and an extension stud (Item 2B2) inserted into the stud. Snap lock steel studs into the steel tracks (Item 2A) at nominal 24-inches on center.

### Listed Manufacturer:

Trakloc International LLC  
358TSA-030-114 Telescoping Stud Assembly (Item 2B)  
358TSO-030-114 Stud (Item 2B1)  
358TSE-030-114 Extension Stud (Item 2B2)

- C. Gypsum Board – Affix one layer of Type X 5/8-inch thick gypsum board affixed to each side of the telescoping stud assemblies (Item 2B) and tracks (Item 2A) using #8 1-1/2-inch bugle head screws spaced nominally 8-inches on center in the field and around the perimeter. Place no screws nominally 4-inches from the top of the Type X 5/8-inch thick gypsum board. Create a maximum 1-inch head of wall joint at the top of the wall assembly (Item 2) by cutting the Type X 5/8-inch thick gypsum board 1 inch shorter than the height between the steel tracks (Item 2A).

3. JOINT TREATMENT – Maximum 1-inch joint.

- A. Flute Packing Material – Use only mineral wool bearing an Intertek Certified Product Label and meeting the following minimum requirements. Fill the voids created between the flutes in the steel decking (Item 1A) with minimum 4 pcf mineral wool cut into trapezoidal “plug” shapes measuring nominally 3/4 inches less

in length than the distance from exposed face to exposed face between the Type X 5/8-inch thick gypsum board (Item 2C) and larger than the trapezoidal openings being filled. Install the trapezoidal “plug” shapes measuring minimum 7-3/4 inches wide at the base, 5 inches wide at the top, and 4 inches deep into the open flutes in the steel decking (Item 1A).

- B. Joint Packing Material – Use only mineral wool bearing an Intertek Certified Product Label and meeting the following minimum requirements. Fill the joint created between the flute packing material (Item 3A) and the top edge of the Type X 5/8-inch thick gypsum board (Item 2C) with 4 pcf mineral wool cut into two filler strips nominally measuring 1-1/2 inches wide by 3/8-inch thick by 24-inches long. Install the filler strips and compress their butt joints. The surface of the flute packing material (trapezoidal shapes) (Item 3A) and the filler strips make a flush recessed surface. Confirm nominal 1/4-inch recess from the exposed face of the Type X 5/8-inch thick gypsum board (Item 2C) to the flush face of the mineral wool insulation.
- C. FILL, VOID OR CAVITY MATERIAL – Fill the nominal 1/4-inch recess with sealant measuring minimum 1/4-inch thick. Trowel-apply sealant over all of the flute packing material (Item 3A) and the joint packing material (Item 3B) overlapping the sealant onto the Type X 5/8-inch thick gypsum board (Item 2C) nominally 1/2 inch.

### Listed Manufacturer:

3M  
Joint Sealant  
Interam™ FireDam™ 150+ Caulk (Item 3C)