



TEST REPORT

**Intertek Testing
Services NA, Inc.**
16015 Shady Falls Road
Elmendorf, TX 78112
(voice) 210-635-8100
(fax) 210-635-8101
[www.intertek-
etlsemko.com](http://www.intertek-etlsemko.com)

ASTM E119-05a

Fire Tests of Building Construction and Materials

1-HR FIRE RESISTANCE TEST OF A
NON-LOADBEARING STEEL STUD WALL

Project No. 3094652D

May 31, 2006

Prepared for:

Trakloc International, LLC
42130 Remington Ave
Temecula, CA 92589



ABSTRACT

A 10 ft x 10 ft non-loadbearing wall constructed with 20GA, 3-5/8" galvanized steel Trakloc telescoping studs spaced 24" o.c., clad on each side with a single layer of 5/8" thick Type X gypsum wallboard (USG), produced, assembled and tested as described herein, successfully met the conditions of acceptance as outlined in ASTM Method E119-05a Fire Tests of Building Construction and Materials for a fire endurance rating of 1 hour.

This report is for the exclusive use of Intertek's Client and is provided pursuant to the agreement between Intertek and its Client. Intertek's responsibility and liability are limited to the terms and conditions of the agreement. Intertek assumes no liability to any party, other than to the Client in accordance with the agreement, for any loss, expense or damage occasioned by the use of this report. Only the Client is authorized to copy or distribute this report and then only in its entirety. Any use of the Intertek name or one of its marks for the sale or advertisement of the tested material, product or service must first be approved in writing by Intertek. The observations and test results in this report are relevant only to the sample tested. This report by itself does not imply that the material, product, or service is or has ever been under an Intertek certification program.

Michael E. Dey
Project Manager

6/14/06

Date

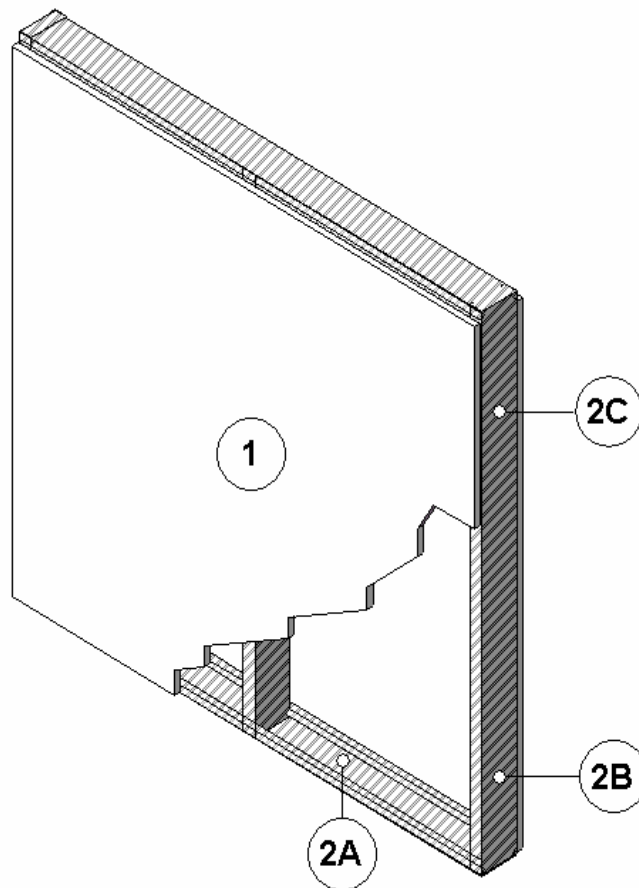
Reviewed and approved:

Javier O. Trevino
Senior Project Engineer

6/14/06

Date

TIL/WA 60-01
Design No. NBW 350
NON-LOADBEARING WALL ASSEMBLY
ASTM E 119-05 – Assembly Rating - 1 hr



1. WALL ASSEMBLY – Non-load bearing wall assembly positioned perpendicular to the floor ceiling assembly and consisting of the following:

- A. Gypsum Board – 5/8 in. thick Type X gypsum board, 4 ft. wide, applied vertically with edges coincident with studs, or horizontally with nom. 1/8" gaps between boards. Joint compound pressed into these gaps full board depth. Attach gypsum board to studs with No. 6 x 1-1/4"

- long self tapping drywall screws, spaced 8 in. o.c. along the perimeter and along all studs. Optional – When deflection movement is required. Create a nominal 1-inch wide joint at the top edge of the Type X 5/8-inch thick gypsum board and the bottom of floor/ceiling assembly.
- B. Joint Tape and Compound - vinyl or casein, dry or premixed joint compound applied to face layers of

Fire-Resistant Walls

gypsum board in two coats to all exposed fastener heads and gypsum board joints. A min. 2 in. wide paper, plastic, or fiberglass tape is embedded in first layer of compound over joints in gypsum board.

2. Steel Framing System –
 - A. Steel Floor Tracks and Ceiling Runners – Two “C-shaped” roll formed nominal 0.030 inch thick steel tracks each nominally 3-5/8 inch wide with two 1-3/8 inch vertical legs. Use nominal 3/16-inch diameter, 1-1/4-inch long, hexhead concrete screws nominally spaced 24 inches on center, to attach one track to the bottom of floor/ceiling assembly at the top of the floor and the other track to the bottom of the floor, aligned with the top track.

Listed Manufacturer:

Trakloc International LLC

- 358TTS-030-138 Tracks

- B. Steel Studs – “C-shaped” roll formed nominal 0.030 inch thick steel studs (telescoping stud assembly) nominally measuring 3-5/8 inch wide with two 1-3/8 inch vertical legs. The telescoping stud (2B) assembly consists of a stud and an extension stud (2C). “Snap-

lock” steel stud framing into the steel floor tracks and ceiling runners at a maximum 24-inches on center.

Listed Manufacturer:

Trakloc International LLC

- 358TSA-030-114 Telescoping Stud Assembly
 - 358TSO-030-114 Stud (2B)
 - 358TSE-030-114 Extension Stud (2C)

3. JOINT TREATMENT – Not shown. Optional – Use when deflection movement required. Apply materials bearing an Intertek Certification Mark applied in accordance with their fire-resistive joint Design Listing.

- A. Joint Packing Material – Fill the joint created between the floor/ceiling assembly and the top edge of the Type X 5/8-inch thick gypsum board with a nominal 4 pcf mineral wool insulation. Create a nominal ¼-inch recess from the exposed face of the Type X 5/8-inch thick gypsum board.

- B. FILL, VOID OR CAVITY MATERIAL Fill the nominally measuring ¼-inch deep recess with a fire rated sealant. Trowel-apply the sealant over all of the packing material overlapping the sealant onto the Type X 5/8-inch thick gypsum board.